

SenNet THL-IM - RF

Temperature – Humidity – Luminosity – Movement detector – Pulse counter x1

Content

Technical description of the product SenNet THL-IM – RF. Temperature, humidity, luminosity, movement detection and 1 low frequency pulse counter.

SenNet dataloggers can read the information of the SenNet THL – IM - RF devices using radio frequency.

Warnings

Please, read carefully the technical specifications and the recommendations before connecting the device. This is a precision electronic device; do not install near heat/cold sources, radiating sources, corrosive environments or explosive atmospheres that could damage the device.

Warranty

Any internal modification will void the warranty.

Antennas

The antennas should be installed following the ESD protections to prevent damage to the device. The connector is SMA-male.

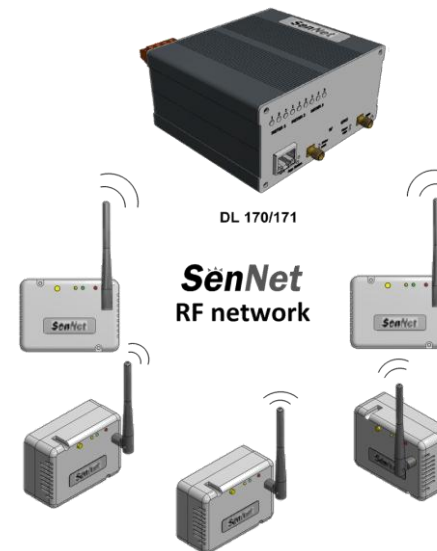
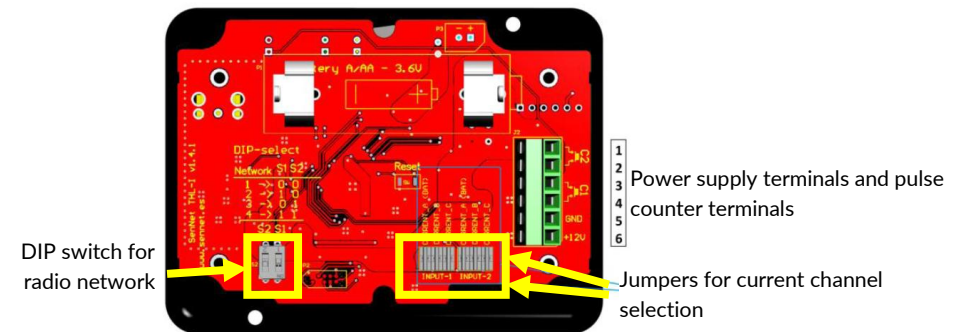
Connexion

This device can be powered with a 3.6 V battery (included) or using an external power supply of 12 Vdc (not included).

RF configuration

The device will be automatically connected to the datalogger by RF. To connect to the RF network, there is a unique identifier for each RF device. (See the label on the side of the device).

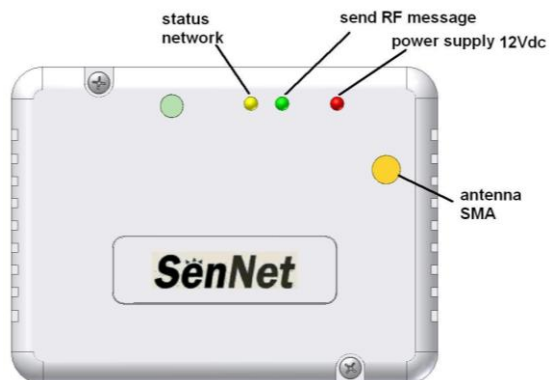
It is possible to have up to 4 independent networks in the same place. To set the network ID there is a DIP switch under the top aluminium cover. (The factory setting is network n. '1').



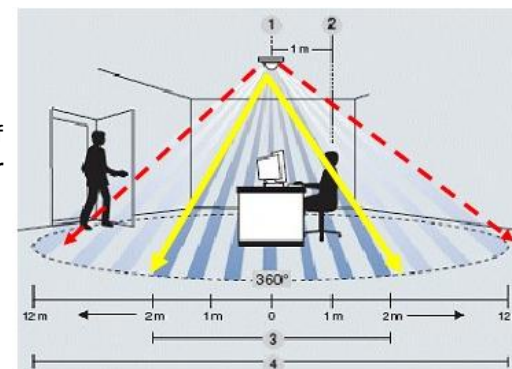
Characteristics	Range	Accuracy
Temperature	-40 .. +85°C	± 1°C
Humidity	0.....100%	± 3.5%
Luminosity	0.....210 lux	
Range of movement detection	12 m	
Max. Pulse frequency	10Hz	
Sending frequency	5 min	
Battery durability (3600mAh @ 3.6V)		
Sending environmental values (5 min)	3 years (approx.)	
Counting pulses (1 pulse/10seg)	2 years (approx.) (at 40µA current)	

DIP switch*		
NET	DIP-1	DIP-2
1	OFF	OFF
2	ON	OFF
3	OFF	ON
4	ON	ON

*we recommend not to modify this switch



Operating radius of the movement sensor



Current selection	A (recommended for battery)	B	C
-------------------	--------------------------------	---	---

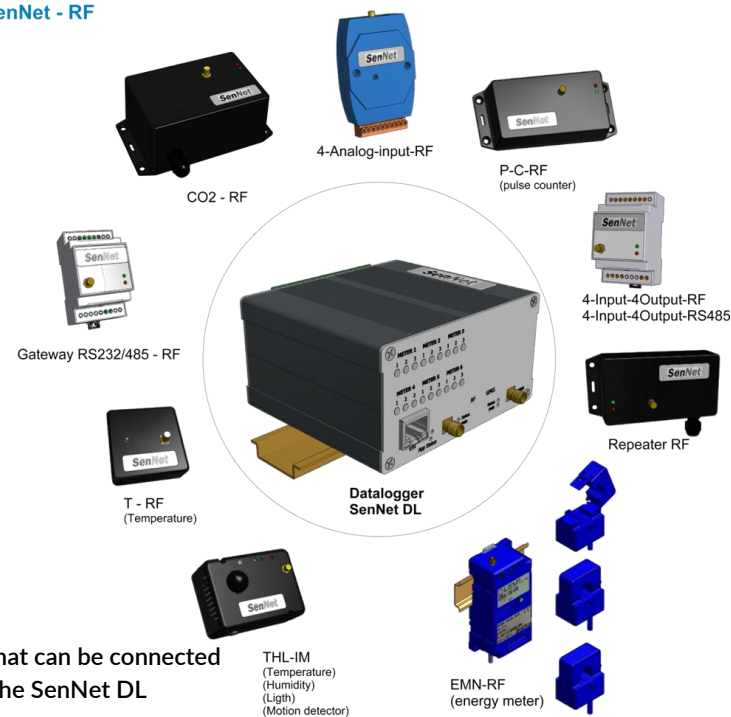
Current (intensity) 40 µA 1.1 mA 11 mA

In industrial environments, the higher the current, the more reliable the pulse detection; however, the battery life will be shorter.

Terminal / polarity transistorized input	1(-)	2(+)	3(-)	4(+)	5	6
Description	Unable	 Counter 1*		GND	12 Vdc	

**It is recommended to use transistorised inputs or reed relays. Normal relays or pulsers can produce rebounds.*

SenNet - RF



Devices that can be connected by RF to the SenNet DL dataloggers