



# **SenNet**

Monitoring Solutions

## Compact Electricity Meter

**SenNet Compact Meter**

“6 three-phase meters on  
the palm of your hand”

Analyse your electrical circuits  
**MONITORING OF MEASURES**

## Reduce costs and space

---

---

SenNet Compact Meter is an analyser with 6 three-phase internal electricity meters (or 18 single-phase). **It is an ideal solution to divide into segments the consumption** of facilities in which you want to analyse many electrical circuits.

It can be placed near the principal electrical box or next to different secondary ones. Any kind of facility is suitable for install it, either hotels, hospitals, factories, shopping malls...





# One Compact Meter **for each necessity**

## CM Model

Up to 3 three-phase meters  
(or 9 single-phase)



## CM+ Model

Up to 6 three-phase meters  
(or 18 single-phase)

## The EASIEST installation...



### Compact Format

Everything you need in only one  
device of 106x95x95 mm  
(4.2"x 3.7" x 3.7")



### Time saving

Installation made in less  
than 20 min.



### Wiring saving

Sending of data wireless.

Complete the Wi-Fi configuration in seconds

**SenNet**  
Monitoring Solutions

**SenNet Meter Wifi**

**Current Status: Online**

Welcome | General Parameters | Internal Meters | **Setup Wifi** | Access Data | About

**WiFi Connectivity Profiles Settings**

Add Profile

SSID:

Security Type: ☒ Open ☐ WEP ☐ WPA1 ☐ WPA2

Security Key:  A sequence of  
ASCII-encoded char

Profile Priority:  Enter a value 0-7 (0-  
lowest and 7-highest)

The new Profile will take affect only after reset

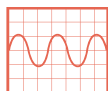
# Benefits: CM and CM+



CM+ Model is able to use two different voltage references for each group of 3 electrical circuits.



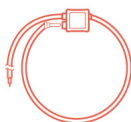
Data monitoring of each phase as well as globally of: Energy, active, reactive and apparent power, cos phi, frequency, current, voltage.



2 modes of configuration:  
Three-phase or single-phase.



Precision class 1% for active and reactive energy.



Possibility to use Split-Core Current Transducer and/or Flexible Current Transducer Rogowski Coil.



Electrical circuits measure – up to 5000A.



Each internal meter has leds for visualising consumption through flash frequency.



Protocol Modbus for RS485 and wireless communication.

## FEATURES

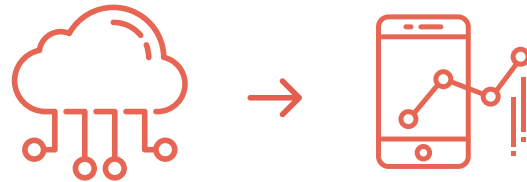
Power supply	100-265 VAC	
Configuration & Data submission	WI-FI (recomended)	Console (RS232-TTL levels)
Communication	RS485 - Modbus RTU (modelo SenNet CM)	SenNet RF 868 MHz (SenNet CM RF model)
Internal Meters (x3) CM (x6 ) CM+	Current measure, compatible with: Curren Transducer CT 0,33Vac / Rogowski coil	Energy (reactive-active-apparent) Power (reactive-active-apparent) Power factor
	Reference of three-phase voltage measure	Current Voltage Frequency
Operating Temperature Range	-20°C..+60°C	
Storage Temperature Range	-30°C..+85°C	

SenNet Compact Meter:  
**PRECISE, USEFUL  
AND RELIABLE**

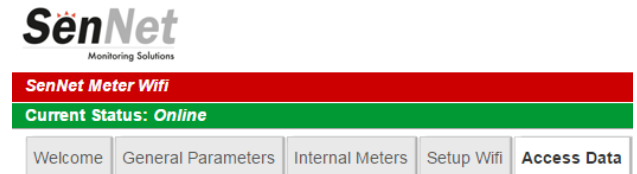
# Setting up and usage

## CONFIGURE YOUR SYSTEM. GET YOUR DATA.

From the point of view of implementation, SenNet Compact Meters include a **Webserver** which permit configure safely all the operation parameters required.



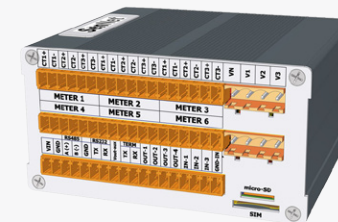
Using a **smart phone, pc or laptop** and through a Wi-Fi connection, you will be able to visualise any measure quickly and easily.



Meters			
	Meter 1	Meter 2	Meter 3
Frequency	49.99	49.99	49.99
Power factor (Ph:1)	0.00	0.00	0.00
Voltage (Ph:1)	228.97	228.94	229.00
Current (Ph:1)	0.00	0.00	0.00
Active power (Ph:1)	0.00	0.00	0.00
Reactive Power (Ph:1)	0.00	0.00	0.00
Apparent Power (Ph:1)	0.00	0.00	0.00
Active Energy (Ph:1)	0.000	0.000	0.000
Reactive Energy (Ph:1)	0.000	0.000	0.000
Apparent Energy (Ph:1)	0.000	0.000	0.000
Active Energy Total (Ph:1)	21.56	21.42	21.51
Reactive Energy Total (Ph:1)	-2.70	-2.83	-2.77
Apparent Energy Total (Ph:1)	41.88	41.85	41.87
Power factor (Ph:2)	0.00	0.00	0.00
Voltage (Ph:2)	230.83	230.62	230.64
Current (Ph:2)	0.00	0.00	0.00
Active power (Ph:2)	0.00	0.00	0.00
Reactive Power (Ph:2)	0.00	0.00	0.00

## THE COMPLEMENT TO SENNET DATALOGGERS

CM and CM+ devices are the perfect complement to SenNet Dataloggers DL (DL150, DL151, DL170, DL171 and DL172) for applications in which is necessary **to increase the number of measures of the electrical circuits.**



### DL 172

Increase the number of measures of your electrical circuits with CM and CM+

Your information always available  
**FROM ANY PC, LAPTOP OR SMART PHONE**



# SenNet

Monitoring Solutions

Ctra. de la Coruña KM. 18,200.  
Edificio C – Planta Baja. 28231  
Las Rozas – Madrid

+34 91 6362281  
info@satel-iberia.com

[sennetmonitoring.com](http://sennetmonitoring.com)