

# ComAnt<sup>®</sup> Communications Antennas

## FREQUENCY INDEPENDENT DATA

Description: directional end fire yagi array, field adjustable pattern

Frequency: 135-145 MHz, 144-156 MHz, 154-166 MHz, 163-177 MHz, 221-239 MHz, 326-353 MHz, 336-364 MHz, 365-395 MHz, 380-410 MHz, 405-440 MHz, 440-475 MHz

Impedance: 50 ohm

Gain: 7 dBi

H -3 dB: 75°

E -3 dB: 59°

F/B: 0 dB

Polarization: vertical/horizontal

Connector: N-female/TNC-female

VSWR: < 1.5

Radome: UV resistant ABS/FG, RAL 7012, PU foam filling copper

Radiator:

Passive

elements: coated aluminium

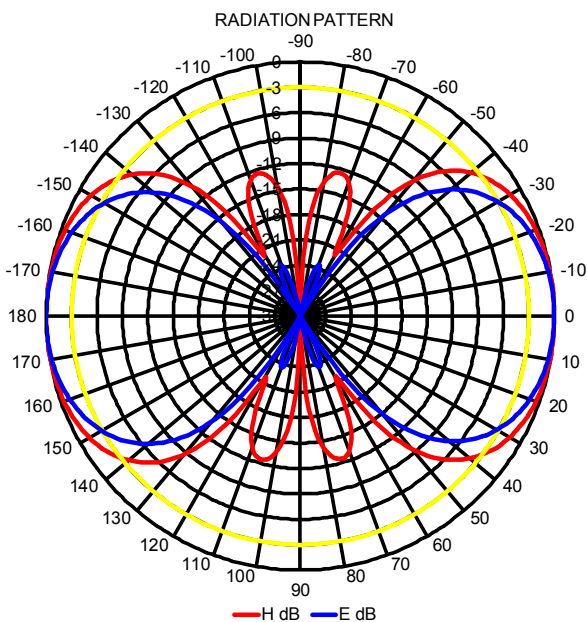
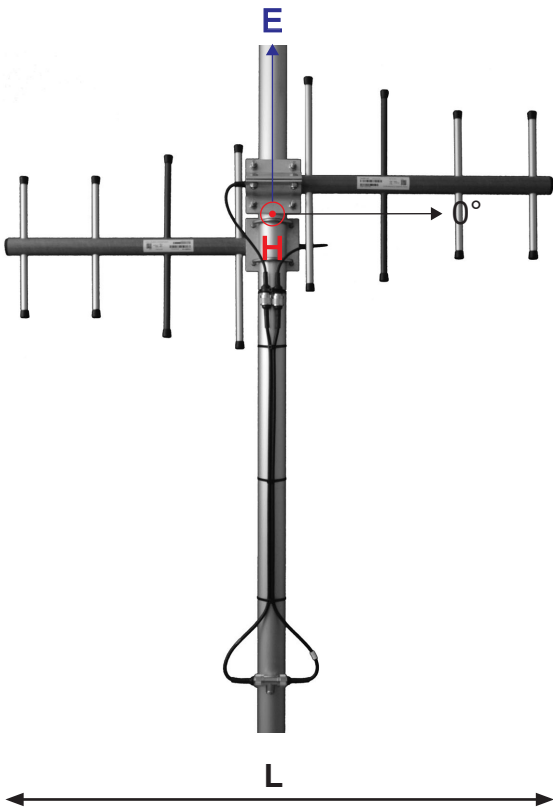
Attachment: Ø 35-60 mm, aluminium alloy bracket, stainless steel V-bolts and self-locking nuts

Lightning

protection: DC-short circuited

Temperature: -40°C - +80°C

IP: 67



CAF2+ DIRECTIONAL END FIRE YAGI ARRAY